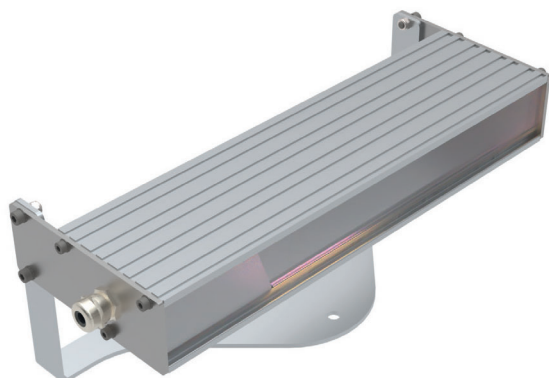


# HELIPORT EQUIPMENT WHITE FLOODLIGHT FOR INFRASTRUCTURE LIGHTING



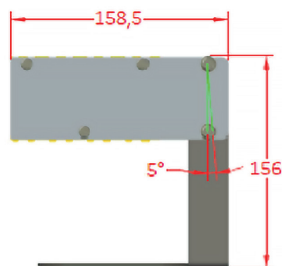
## 01. DESCRIPTION

The **WHITE FLOODLIGHT** is a light of 10,000 cd intensity with multi-LEDs technology, developed with an aluminum design for a natural fresh cooling system. It has been designed for an easy installation.

## 02. ADVANTAGES

- Lifetime >10 years
- Multi – LEDs
- Reflector for beam optimization
- Shortened time of installation
- No maintenance
- 2-year warranty
- Integrated radiator for a natural cooling
- One single block, with electronics embedded
- Protection Class: IP66
- Frangible

### DIMENSIONS



## 03. MODELS

REFERENCE	VOLTAGE	PHOTOCELL	DRY CONTACT
P-TLOF-LED	110-240V	Not included	Not included

## 04. CHARACTERISTICS

LUMINOUS	
Luminous Source	LEDs
Colour	White
MTBF	100,000 hours
ELECTRICAL	
Tension	110-240V
Operating Temperature	-55°C to +55°C
Consumption	< 17 Watts max
Protection Class	IP66
MECHANICAL	
Body lamp material	Aluminium
Lens Material	Glass
Fixation	M8 screw – On ground
Height	156 mm
Width	158.5 mm
Weight	< 3 kg
ENVIRONMENTAL	
Humidity	100%
Frost	-60°C
Wind Speed	240 km/h
CERTIFICATIONS	
CE	EN60947-1 CEI60364, NF C15-100 2014 / 35 / UE
Quality	ISO 9001 : 2015
WARRANTY	
Warranty period	2 years
OPTIONS	
Solar Power Supply	<input checked="" type="checkbox"/>