

## INSET LIGHTS FOR PERIMETER BEACONING (1-2)

Perimeter lights shall not be taller than 25cm and must be recessed in the ground in case considered as obstacle to proper take-off operations. On elevated helipads FATO and TLOF areas can coincide. These fittings can be used as:

TLOF perimeter signal (green)  
FATO perimeter signal (white)  
Aiming Points signal (white)  
Flight Path Alignment signal (white)

## WHITE FLOODLIGHTS FOR TLOF ILLUMINATION (3)

White floodlights for TLOF must be positioned in such way that pilots shall not be dazzled whilst airborne. The same applies for the personnel working on the helipad.

They must be 25cm tall at the maximum when located within the safety area and have to be frangible.

Being of white signal, the average luminosity level of the floodlights should be 10 lux.

## HELICOPTER APPROACH PATH INDICATOR (4)

HAPI systems provide pilots with a secure and precise glide slope on their final approach. If pilots consider their position as incorrect they can easily fix the trajectory of the helicopter with the help of these systems.

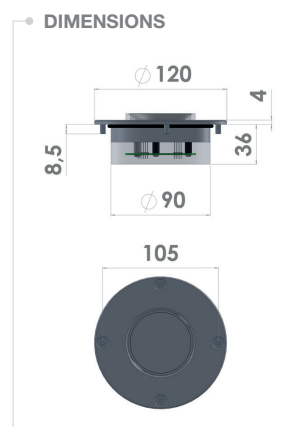
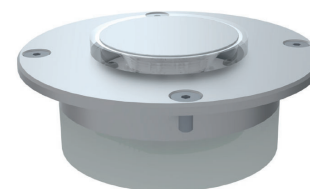
## WIND DIRECTION INDICATOR (5)

Helipads should always be equipped with at least one Wind Direction Indicator (WDI). When installed, the WDI should always be positioned outside of the safety area and in a way that no perturbation is coming from the helicopter rotor.

The WDI must be visible when pilots are approaching the helipad and in case the helipad is used by night a lighting system along with an obstacle light should be provided.

## INSET LIGHTS FOR TAXIWAYS (6)

Taxiway beacons should be less than 25cm tall and should be recessed in the ground in case considered as obstacle to proper take-off operations. They must be of blue signal and indicate the path for vehicles on ground.



SHALLOW BASE

## 01. ADVANTAGES

- Long lifetime >10 years
- Optimized light output due to patented optics concept
- Compact and low propulsion
- Maximum resistance
- 2-year warranty

## 02. MODELS

USAGE	COLOUR***	REFERENCE*	VOLTAGE**
TLOF Perimeter	Green	TLOF-G-ISF-AB	24V DC
		TLOF-G-ISF-MB	230V AC
FATO Perimeter	White	FATO-W-ISF-AB	24V DC
		FATO-W-ISF-MB	230V AC
Aiming Points	White	AIM-W-ISF-AB	24V DC
		AIM-W-ISF-MB	230V AC
Flight Path Alignment	Blue	PATH-W-ISF-AB	24V DC
		PATH-W-ISF-MB	230V AC
Taxiway	Blue	TAXI-B-ISF-AB	24V DC
		TAXI-B-ISF-MB	230V AC
Shallow Base	N/A	INSET-BASE-2	N/A

\* Semi-flush or full-flush versions available. \*\* 6,6A versions available. \*\*\* Infrared versions available.

## 03. CHARACTERISTICS

LUMINOUS	
Luminous source	LEDs
MTBF	100 000 hours
ELECTRICAL	
Voltage	Available in 24V or 230V
Operating temperature	-40°C to +55°C
Consumption	FATO : < 10W / Others : < 6W
MECHANICAL	
Protection class	IP68
Mounting	Full flush or semi-flush
Height / Width	52,5mm / 120mm
ENVIRONMENTAL	
Humidity	100%
Frost	-60°C
Wind speed	240 km/h
CERTIFICATIONS	
CE	EN60947-1 ; CEI60364, NF C15-100 2014 / 35 / UE
ICAO	Annex 14, Volume II, Chapter 5
Quality	ISO 9001 : 2015

