

# AIRPORT EQUIPMENT

## FAA WIND DIRECTION INDICATOR

### 3 OR 6 METERS



3 METERS

6 METERS

## 01. DESCRIPTION

Our **FAA WDI** is compliant to the FAA rules. It is manufactured in galvanized steel with an orange paint and is available in 3 or 6 meters. The 3m WDI is tiltable at the base of the mast and the 6m WDI is tiltable in the middle of the mast.

3 diameters of preformed wind vane are proposed together with the suitable windsocks. The wind vane support is equipped with two auto-lubricated teflon rings to allow its rotation. This system is very resistant to wear phenomena, and doesn't require any maintenance, therefore offering an exceptional life time.

Various options are available such as the windsock lighting (internal or external) and the topmast Obstacle Light. These options can operate under different power supplies: 24-48V, 230V, Solar but also in 6,6 A.

## 02. MODELS\*

One complete wind direction indicator is composed by:

**ONE MAST + ONE WINDVANE + ONE UPPER LIGHTING POLE**

(Windsock to be ordered separately)

### MAST

| REFERENCE | MATERIAL         | COLOUR | HEIGHT | HINGE  | BRACES |
|-----------|------------------|--------|--------|--------|--------|
| FAA3      | Galvanized steel | Orange | 3m     | Base   | -      |
| FAA4      |                  | Orange | 4m     | Base   | -      |
| FAA6      |                  | Orange | 6m     | Middle | -      |
| FAA3-INOX | Stainless steel  | Orange | 3m     | Base   | -      |
| FAA4-INOX |                  | Orange | 4m     | Base   | -      |
| FAA6-INOX |                  | Orange | 6m     | Middle | ✓      |

### WINDVANE COMPATIBILITY

| REFERENCE                      | 3M | 4M | 6M | 7M40 |
|--------------------------------|----|----|----|------|
| COMPATIBILITY WITH MAST HEIGHT |    |    |    |      |
| GFAA30                         | ✓  | ✓  | -  | -    |
| GFAA45                         | ✓  | ✓  | ✓  | ✓    |
| GFAA50                         | ✓  | ✓  | ✓  | ✓    |
| GFAA60                         | ✓  | ✓  | ✓  | ✓    |
| GFAA90                         | -  | -  | ✓  | ✓    |

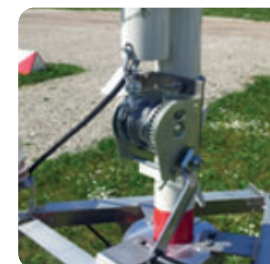
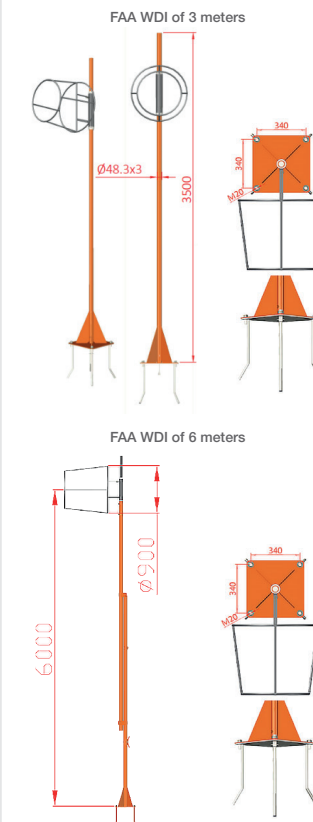
### UPPER LIGHTING POLE

| REFERENCE              | POWER SUPPLY | TOPMAST BEACON | INTERNAL LIGHTING |
|------------------------|--------------|----------------|-------------------|
| WITH EXTERNAL LIGHTING |              |                |                   |
| SYSECL-EXT-E2L-II      | 230VAC       | -              | ✓                 |
| SYSECL-EXT-EB2L-II     | 230VAC       | ✓              | ✓                 |
| SYSECL-EXT-ESL-II      | Solar 24V    | -              | ✓                 |
| SYSECL-EXT-EBSL-II     | Solar 24V    | ✓              | ✓                 |
| SYSECL-EXT-EB6L        | 6.6A         | ✓              | ✓                 |

## 03. CHARACTERISTICS

| MECHANICAL             |  |
|------------------------|--|
| Height                 | 3 to 6 meters                                |
| Tiltable part location | Base (3 meters WDI) or Middle (6 meters WDI) |
| Protection             | Galvanized steel                             |
| Paint                  | Orange                                       |
| Mounting               | Anchorage Block (Included)                   |
| Anchorage Block        | 600 x 600 x 800 mm                           |
| Preformed wind vane    | 30 / 60 / 90 cm                              |
| Braces                 | No   |
| ENVIRONMENTAL          |  |
| Humidity               | 100%   |
| Frost                  | -60°C  |
| Wind speed             | 160 km/h                                     |
| CERTIFICATIONS         |  |
| FAA                    | Compliant                                    |
| Quality                | ISO 9001 ; 2008                              |
| Warranty               | 1 year                                       |
| ELECTRICAL             |  |
| Power supply           | 6.6A / 230V / 24V (Solar)                    |
| Operating temperature  | -55°C to +55°C                               |
| Consumption            | 3 Watts (obstacle light)                     |
|                        | 40 Watts (external light)                    |
| Protection Class       | IP66   |

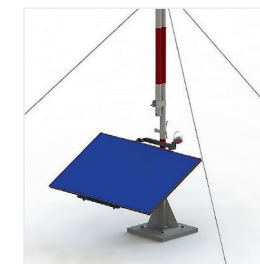
### DIMENSIONS



Hoist (in option)



External Lighting + Obstacle Light\*



Solar power supply