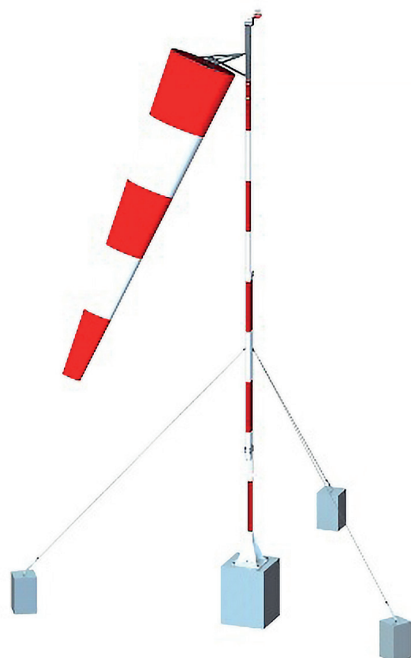


# AIRPORT EQUIPMENT

## STNA (ICAO) WIND DIRECTOR INDICATOR

### 7.40 METERS



## 01. DESCRIPTION

The **STNA WDI** is our ICAO compliant mast. This tilting mast measures 7,40 Meters and is equipped with 3 braces to ensure its stability. The standard wind vanes are 60 or 100 cm diameter, but other diameters are also available. The wind vane support is equipped with two auto-lubricated Teflon rings to allow its rotation. This system is very resistant to wear phenomena, and doesn't require any maintenance, therefore offering an exceptional long life time.

In option, the WDI can be manufactured in stainless steel, aluminum or fiber glass. A frangible ring can be added at the bottom of the pole for frangibility, and different power supply versions are available (solar, 230V, 6.6A).

## 02. MODELS

REFERENCE	WIND VANE DIAM.	POWER SUPPLY	POLE + WIND VANE	INTERNAL LIGHTING	OBSTACLE LIGHT	WIND SOCK
STNABG60	60 cm		X			
STNABG60M	60 cm		X			X
STNABG100	100 cm		X			
STNABG100M	100 cm		X			X
STNABG60E2L	60 cm	230V	X	X		
STNABG100E2L	100 cm	230V	X	X		
STNABG60E6L	60 cm	6,6A	X	X		
STNABG100E6L	100 cm	6,6A	X	X		
STNABG60C2L	60 cm	230V	X	X	X	X
STNABG100C2L	100 cm	230V	X	X	X	X
STNABG60C6L	60 cm	6,6A	X	X	X	X
STNABG100C6L	100 cm	6,6A	X	X	X	X



REFERENCE	DESIGNATION
LBIA-HMA-6.6A	Low intensity Obstacle Light Type A for WDI 6.6A
LBIA-HMA-C048	Low intensity Obstacle Light Type A for WDI 110-240V
LMA00BB	Windsock internal lighting
MA-FRANGIBLE	Frangible part at the bottom of the mast

## SCOPE OF APPLICATIONS



Pylon



Airport



Building



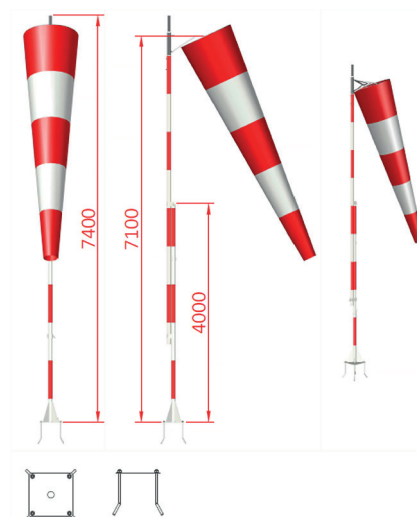
Stack



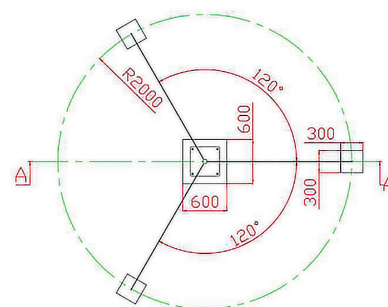
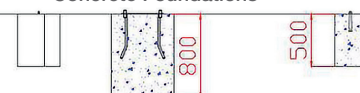
### 03. CHARACTERISTICS

MECHANICAL	
Height	7.40 meters
Tiltable part	Yes
Protection	Galvanized steel + White epoxy paint
Paint	Red & White
Mounting	Anchorage Block (Included)
Wind vane	Helipads: Diameter 60cm or 90cm
	Airports: Diameter 100cm
Braces	3 x 120°
Anchorage Block	600 x 600 x 800 mm
ENVIRONMENTAL	
Humidity	100%
Frost	-60°C
Wind speed	160 Km/h
CERTIFICATIONS	
CE	EN60947-1 CEI60364, NF C15-100 2014 / 35 / UE
OACI	Annex 14, Volume I, Chapter 6
Quality	ISO 9001 ; 2015
WARRANTY	
Warranty period	2 years
ELECTRICAL	
Power supply	6.6A / 230V / 24V (Solar)
Operating temperature	-55°C to +55°C
Consumption	3 Watts (obstacle light)
	8 Watts (internal light)
Protection Class	IP66
OPTIONS	
Reinforced mast	✓
Obstacle Light	✓
External lighting by 4 Leds Floodlights (230V or 6.6A) Consumption < 4 x 5.2 W	✓
Frangibility of the mast	✓
Solar power supply	✓
Stainless steel / Aluminum / Fiber Glass manufacture	✓

#### DIMENSIONS



Concrete Foundations



Hoist (in option)



HV Line

Crane

Structure

Wind Turbine