

# MEDIUM INTENSITY OBSTRUCTION LIGHT DUAL TYPE A & C

WHITE FLASH (20 000 CD DAY / 20 000 CD TWILIGHT) + RED STEADY BURN (2 000 CD NIGHT)



## 01. DESCRIPTION

The **LEDEO MIAC** is a medium intensity beacon equipped with the multi-LEDs technology. Dedicated to a day (white flash) and night (red flash) beaconing, it is a long life beacon (100 000 hours), very robust and with a low consumption (<50W). A photocell and a dry contact can be provided either in the light or deported in a control cabinet (safety power supply or conventional control panel). It can be solar power supplied and has been designed for an easy installation.

## 02. ADVANTAGES

- Integrated synchronization wire (optical fiber, GPS and TCPIP available)
- Long life time > 10 years
- Multi-LEDs technology
- Low consumption < 50W
- DELTA BOX exclusive self-test included with photocell
- No maintenance
- 2-year warranty
- Zamac box with epoxy power painting
- IP66

## 03. APPLICATIONS

Rules concerning aircraft beaconing are established by the ICAO (Annex 14, Chapter 6). Medium Intensity lights can be installed on structures from 45 to 150 meters tall, with an intermediary level of marking. According to the rules, an uninterruptible power supply cabinet has to be installed to insure a 12 hours of beaconing in case of power supply failure.

## 04. MODELS

REFERENCE	VOLTAGE	PHOTOCELL	DRY CONTACT
LMIAC01BB*	48V DC	Not included	Included
LMIAC11BB	48V DC	Included	Included
LMIAC01MB*	110-240V AC	Not included	Included
LMIAC11MB	110-240V AC	Included	Included

\* to be used with an external DELTA BOX photocell

SCOPE OF APPLICATIONS



Pylon



Airport



Building



Stack

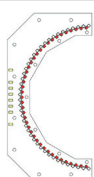


## 05. CHARACTERISTICS

LUMINOUS	
Luminous source	White flashing / Red steady burning LEDS
Horizontal / Vertical beam	360° / 3°
Luminous intensity	20 000 Cd (Day, white) 2 000 Cd (Night, red)
Flash frequency	20 to 60 fpm
MTBF	100 000 hours
ELECTRICAL	
Voltage	48V DC / 110 to 240V AC
Operating temperature	-20°C to +55°C
Consumption	< 50 Watts
Current I <sub>max</sub> (day mode)	In 48V: I = 4 400mA In 230V: I < 1 000mA
Current I <sub>max</sub> (night mode)	In 48V: I = 1 400mA In 230V: I < 350mA
Protection class	IP66
MECHANICAL	
Box material	Zamac
Body lamp material	Aluminum
Lens material	Polycarbonate
Mounting	M8 screw (in option)
Height / Width	410mm / 410mm
Weight	< 18 Kg
ENVIRONMENTAL	
Humidity	100%
Frost	-60°C
Wind speed	240 Km/h
CERTIFICATIONS	
CE	EN60947-1 CEI60364, NF C15-100 2014 / 35 / UE
OACI	Annex 14, Volume I, Chapter 6
FAA	Compliant FAA L-864 / L-865
Quality	ISO 9001 ; 2015
WARRANTY	
Warranty period	2 years

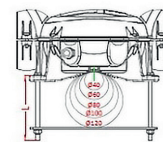
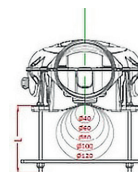
### + AVAILABLE VERSIONS

#### 180° VERSION

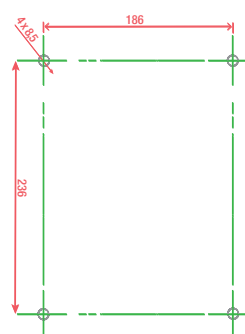
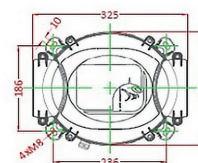


The number of LEDs is divided by two for beacons that need to flash only over a 180° horizontal beam. It enables to decrease the power consumption.

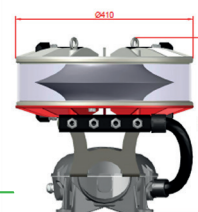
#### DIMENSIONS



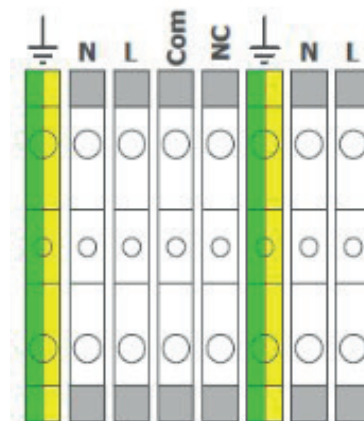
SCREW LENGTH	Ø :	L :
	Ø40	50
	Ø60	70
	Ø80	90
	Ø100	110
	Ø120	130



Drilling



#### WIRING



#### AVAILABLE ACCESSORIES FOR INSTALLATION

- Power supply
- UPS System
- Solar kit
- Type "L" fixation mountings



HV Line



Crane



Structure



Wind Turbine