

MEDIUM INTENSITY OBSTRUCTION LIGHT

TYPE C

RED STEADY BURN (2 000 CD NIGHT)



01. DESCRIPTION

The **LEDEO MIC** is a medium intensity beacon equipped with the multi-LEDs technology. Dedicated to a night (red steady burning) beaconing, it is a long lifetime beacon (100 000 hours), very robust and with a low consumption (<50W). A photocell and a dry contact can be provided either in the light or deported in a control cabinet (safety power supply or conventional control panel). It can be solar power supplied and has been designed for an easy installation.

02. ADVANTAGES

- Long life time > 10 years
- Multi-LEDs technology
- Low consumption <50W
- DELTA BOX exclusive self-test included with photocell
- No maintenance
- 2-year warranty
- Zamac box with epoxy powder painting
- IP66

03. MODELS

REFERENCE	VOLTAGE	PHOTOCELL	DRY CONTACT
LMIC00BB	48V DC	Not included	Not included
LMIC01BB	48V DC	Not included	Included
LMIC11BB	48V DC	Included	Included
LMIC00MB	110-240V AC	Not included	Not included
LMIC01MB	110-240V AC	Not included	Included
LMIC11MB	110-240V AC	Included	Included

SCOPE OF APPLICATIONS



Stack



04. CHARACTERISTICS

LUMINOUS	
Luminous source	Red steady burning LEDs
Horizontal / Vertical beam	360° / 3°
Luminous intensity	2 000 Cd
MTBF	100 000 hours
ELECTRICAL	
Voltage	48V DC / 110 to 240V AC
Operating temperature	-40°C to +55°C
Consumption	< 50 Watts
Current I _{max}	To 48V: I = 1 500 mA
Protection class	To 230V: I < 350 mA IP66
MECHANICAL	
Box material	Zamac
Body lamp material	Aluminum
Lens material	Polycarbonate
Mounting	M8 screw (in option)
Height / Width	365mm / 410mm
Weight	< 16 Kg
ENVIRONMENTAL	
Humidity	100%
Frost	-60°C
Wind speed	240 Km/h
CERTIFICATIONS	
CE	EN60947-1 CEI60364, NF C15-100 2014 / 35 / UE
OACI	Annex 14, Volume I, Chapter 6
FAA	Compliant FAA L-864
Quality	ISO 9001 ; 2015
WARRANTY	
Warranty period	2 years

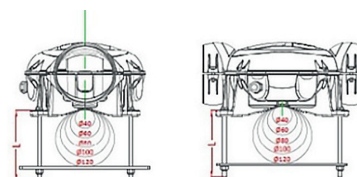
+ AVAILABLE VERSIONS

180° VERSION

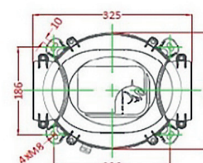


The number of LEDs is divided by two for beacons that need to flash only over a 180° horizontal beam. It enables to decrease the power consumption.

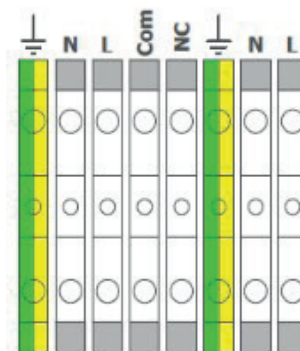
DIMENSIONS



SCREW LENGTH	
Ø :	L :
Ø40	50
Ø60	70
Ø80	90
Ø100	110
Ø120	130



WIRING



AVAILABLE ACCESSORIES FOR INSTALLATION

- Power supply
- UPS System
- Solar kit
- Type "L" fixation mountings



HV Line



Crane



Structure



Wind Turbine