

LOW INTENSITY OBSTRUCTION LIGHT

SOLAR TYPE A – SINGLE AND TWINY

RED STEADY BURN – 10 CD NIGHT

SOLEO TYPE A - SINGLE



SOLEO TYPE A - TWINY



01. DESCRIPTION

The **SOLEOBIA** and **SOLEOBIA TWINY** are environmentally friendly systems, dedicated to an autonomous night beaconing (red steady burning). The long life LEDs (100 000 hours) enable to have a maintenance free system, and the solar station is dimensioned for more than 120 hours of autonomy. The device is provided with a photocell for an automatic switch ON / OFF and a dry contact for failure alarm. It is also available with a 110-240V input as back-up power supply. The TWINY version is equipped with a second light bulb and with the exclusive redundant DELTA BOX system, which automatic test is launched every day. In case of failure of one light bulb, the second light bulb automatically switches on. The specific design of the box is the most convenient solution on the market for installation: the mounting frame is part of the box and its arms can be adjusted in horizontal or vertical position.

02. ADVANTAGES

- Long life time > 10 years
- Proven solar technology and dimensionning
- DELTA BOX exclusive self-test when the photocell is integrated
- Autonomous system (no need for other power supply)
- 2-year warranty
- Zamac box with epoxy powder painting
- Available with cable between the lights and the solar unit for an easier accessibility to the box and panels.

03. APPLICATIONS

Rules concerning aircraft beaconing are established by the ICAO (Annex 14, Chapter 6). Low intensity beacons can be installed on structures up to 45m in height. According to the rules, an uninterruptible power supply cabinet has to be installed to insure a 12 hours beaconing in case of power supply failure.

04. MODELS

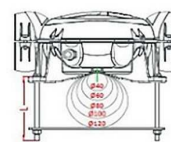
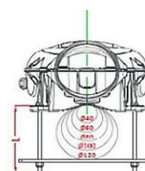
REFERENCE	VOLTAGE	PHOTOCELL	DRY CONTACT	TYPE
SOLBIA10C	Solar	Included	Not Included	Single
SOLBIA11C	Solar	Included	Included	Single
SOLBIATWC	Solar	Included	Included	Twiny



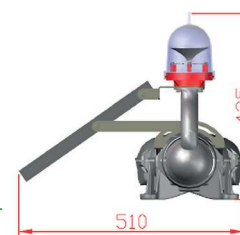
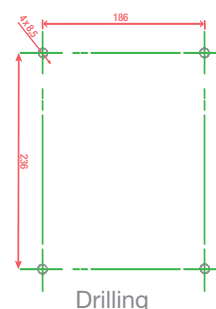
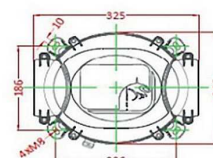
05. CHARACTERISTICS

LUMINOUS	
Luminous source	Red LEDs
Horizontal / Vertical beam	360° / 10°
Luminous intensity	> 10 Cd
MTBF	100 000 hours
ELECTRICAL	
Voltage	Solar
Operating temperature	-10°C to +55°C
Solar panel	10 Watts Monocrystalline
Battery	2x AGM 12V 7Ah
Autonomy	120 hours (without charging)
Protection class	IP66
MECHANICAL	
Body material	Zamac
Lens material	Composite
Mounting	M8 screw (in option)
Height / Width	425mm / 510mm
Weight	< 11 Kg
Solar panel dimensions	345mm x 245 mm
ENVIRONMENTAL	
Humidity	100%
Frost	-60°C
Wind speed	240 Km/h
CERTIFICATIONS	
CE	EN60947-1 CEI60364, NF C15-100 2014 / 35 / UE
OACI	Annex 14, Volume I, Chapter 6
Quality	ISO 9001 ; 2015
WARRANTY	
Warranty period	2 years

DIMENSIONS



SCREW LENGTH	
Ø :	L :
Ø40	50
Ø60	70
Ø80	90
Ø100	110
Ø120	130



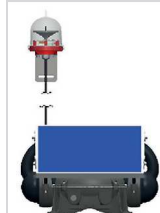
AVAILABLE ACCESSORIES FOR INSTALLATION



- Specific stainless steel mounting
- Iron plate and thread rod

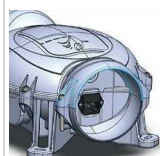
+ AVAILABLE VERSIONS

UNCOUPLED BULB



Can be provided with 5 to 20m of cable between the bulb and solar unit, to ease maintenance operations.

230V BACK-UP



The ZAMAC box is provided with a 110-240V input for a back-up power supply.

REINFORCED



Available with a 20W solar panel for areas with low sun exposure



HV Line



Crane



Structure



Wind Turbine