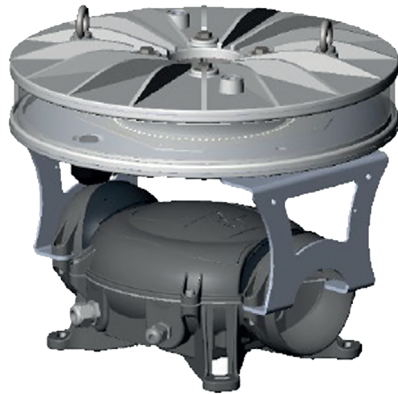


HELIPORT EQUIPMENT

MORSE CODE HELIPAD LIGHT

LMIH



05. CHARACTERISTICS

LUMINOUS	
Luminous source	White flash LEDs
Horizontal beam spread	360°
Vertical beam spread	0° to 10°
Luminous Intensity	> 1 700 Cd at 0° > 2 500 Cd between 1,5° & 2,5° > 1 700 Cd between 3° & 4° > 750 Cd between 5° & 7° > 250 Cd between 8° et 10°
Flash frequency	Morse H Code
MTBF	100 000 hours
ELECTRICAL	
Voltage	240V AC / 50 Hertz
Operating temperature	-55°C to +55°C
Current I _{max}	In 230V: I < 500mA
Protection class	IP66
MECHANICAL	
Box material	Zamac
Body lamp material	Aluminum
Lens material	Polycarbonate
Mounting	M8 screw (in option)
Height / Width	410mm / 410mm
Weight	< 16 Kg
ENVIRONMENTAL	
Humidity	100%
Frost	-60°C
Wind speed	240 Km/h
CERTIFICATIONS	
CE	EN60947-1 CEI60364, NF C15-100 2014 / 35 / UE
OACI	Annex 14, Volume I, Chapter 5
Quality	ISO 9001 ; 2015
WARRANTY	
Warranty period	2 years

01. DESCRIPTION

The **LEDEOMIH** is a heliport white light, monobloc, given LED technology. It offers significant advantages in terms of lifetime (100 000 hours), sturdiness and energy consumption. The ruling of the light can be achieved through a deported command system (UPS, control panel). The photocell for automatic night ignition and the dry contact are both in option. Our heliport beacon gives out series of 4 flashes, every 1.2 second (Morse H Code – in standard other code are possible). Its compact design facilitates its installation.

02. ADVANTAGES

- Lifetime > 10 years
- Multi-LEDs technology
- Low Consumption
- No Maintenance
- 2-year warranty
- Zamac box with epoxy paint
- Wiring on terminal block, cable gland output

03. APPLICATIONS

It is recommended to install a Morse Code Helipad Light on a Heliport: When visual guidance on a long distance is ruled necessary and when that visual guidance is not handled by other means. When it is difficult identifying the Helideck because of the surrounding lights.

The heliport light will be placed on the helipad or next to it, preferably on a lifted point in a way that the pilots are not dazzled at low distance.

04. MODELS

REFERENCE	VOLTAGE	PHOTOCELL	DRY CONTACT
LMIH00MB	110-240V	Not included	Not included
LMIH11MB	110-240V	Included	Included