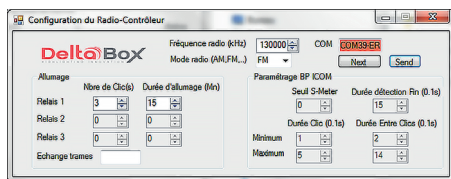


HELIPAD EQUIPMENT

PCL

RUNWAY LIGHTING REMOTE CONTROL BY RADIOFREQUENCY



ELECTRICAL

Power supply	110V-240V
Operating temperature	-40°C to +55°C
Consumption	< 15 Watts max

MECHANICAL

Body material	Painted steel
Height	328mm
Width	330mm
Weight	< 7 Kg

ACCESSORIES INCLUDED

Antenna + antenna cable	2 meters
-------------------------	----------

WARRANTY

Warranty period	2 years
-----------------	---------

01. DESCRIPTION

Our **Pilot Control Lighting (PCL)** system allows a remote control of the ON/OFF of our beacons, dedicated to small airports and helidecks. The system is provided with a push button feature that the pilot will use on the radiofrequency of the helicopter or aircraft.

02. ADVANTAGES

- Quick and easy installation
- Integrated in a waterproof cabinet with electric protection
- Modular system
- Manual turn ON with dry contact available on terminal block
- Set up of the frequency through computer software
- Easy to use

03. APPLICATIONS

Our system allows to remote control the ignition of the runway lighting through radiofrequency and is ICAO / FAA L854 compliant.

04. OPERATION

Our runway lighting control system has 3 outputs protected by a type II circuit-breaker. In standard, 3 clicks on the pilot radio in less than 5 seconds initiates the beacon for a period of 15 minutes. The set of functionalities is programmable via a PC software supplied with the PCL kit.

05. MODELS

REFERENCE	POWER SUPPLY	PHOTOCELL	DRY CONTACT
HELI-PCL	110-240V	-	Option

